

Sink Tornado

Kitchen Sinks

Code: 1579 670



DETAILS

Edge/Installation Type	Standard (8 mm Edge)
Finish	Foster brushed
Material	AISI 304 stainless steel
Texture	Foster brushed
Base	80 cm
Dimensions	790 x 500 mm
Standard fittings	Fixing hooks, gasket, drain, overflow and siphon, boxed packing
Mixer holes	1 standard hole - 2nd hole on request
Built-in hole	770x480 mm

Drainer	No
---------	----

Width	79 cm
-------	-------

Bowl dimension	730 x 440 mm
----------------	--------------

Number of bowls	1 bowl
-----------------	--------

Waste fitting	7" drain
---------------	----------

FEATURES

2nd / 3rd hole available	The sink can be customized with the execution on request of additional holes, usable for double-hole mixers, for remote controlled drains or for the installation of soap dispensers. The positions are marked on the drawings with dotted line holes.
--------------------------	--

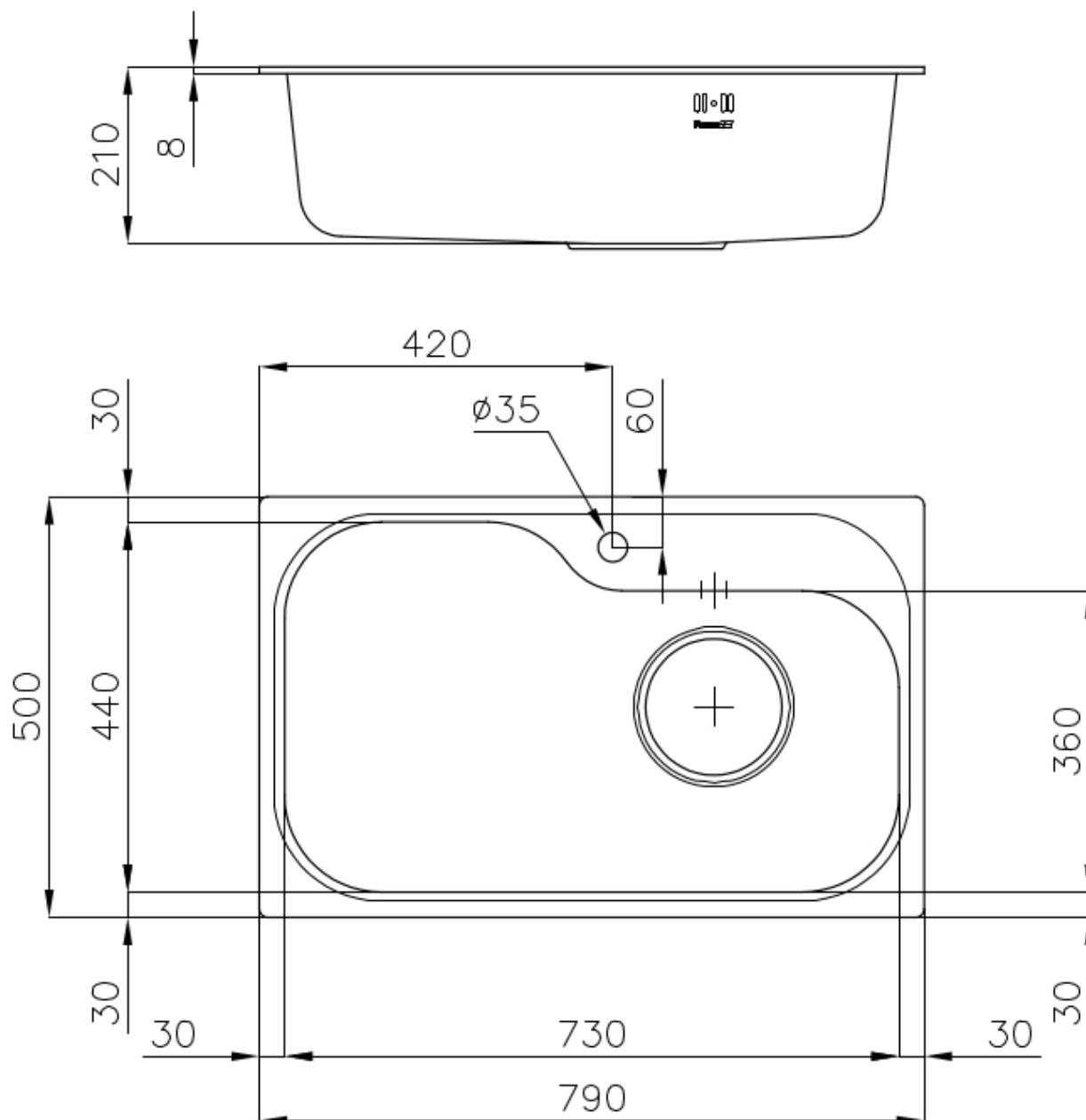
7" xxl waste fitting	The 7" exhaust has dimensions that are much higher than the standard. The drain includes a large and deep basket for the collection of food waste.
----------------------	--

Deep bowls	This bowls reach an important depth, over 20 cm, thanks to the advanced production technology, that can be offer great capieny and practicity in all the washing operations.
------------	--

High thickness	1mm thick steel. A significant thickness, which guarantees the maximum sturdiness and durability.
----------------	---

Sliding brackets	
------------------	--

TECHNICAL DATA



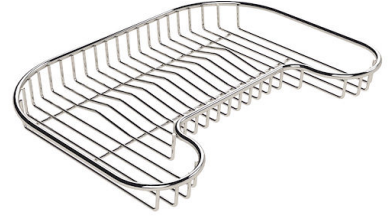
OPTIONAL ACCESSORIES



Iroko-wood chopping board
8659 111



Iroko-wood twin chopping board
8644 003



Stainless steel plate rack
8100 111



**Stainless steel plate rack only
usable in combination with the
accessories 8644 003**
8100 154

* only in combination with the accessory
8644 003



Vaschetta bianca
8152 100



White colander
8151 100

RECOMMENDED PAIRINGS



Mixer Tap Gamma
8483 001



Mixer Tap Lorenzo
8466 000